

# **LG-T2727RGBA-TD-A**

SPEC.NO. : SZ19081205  
DATE : 2020/05/07  
REV. : A/1

Approved By:

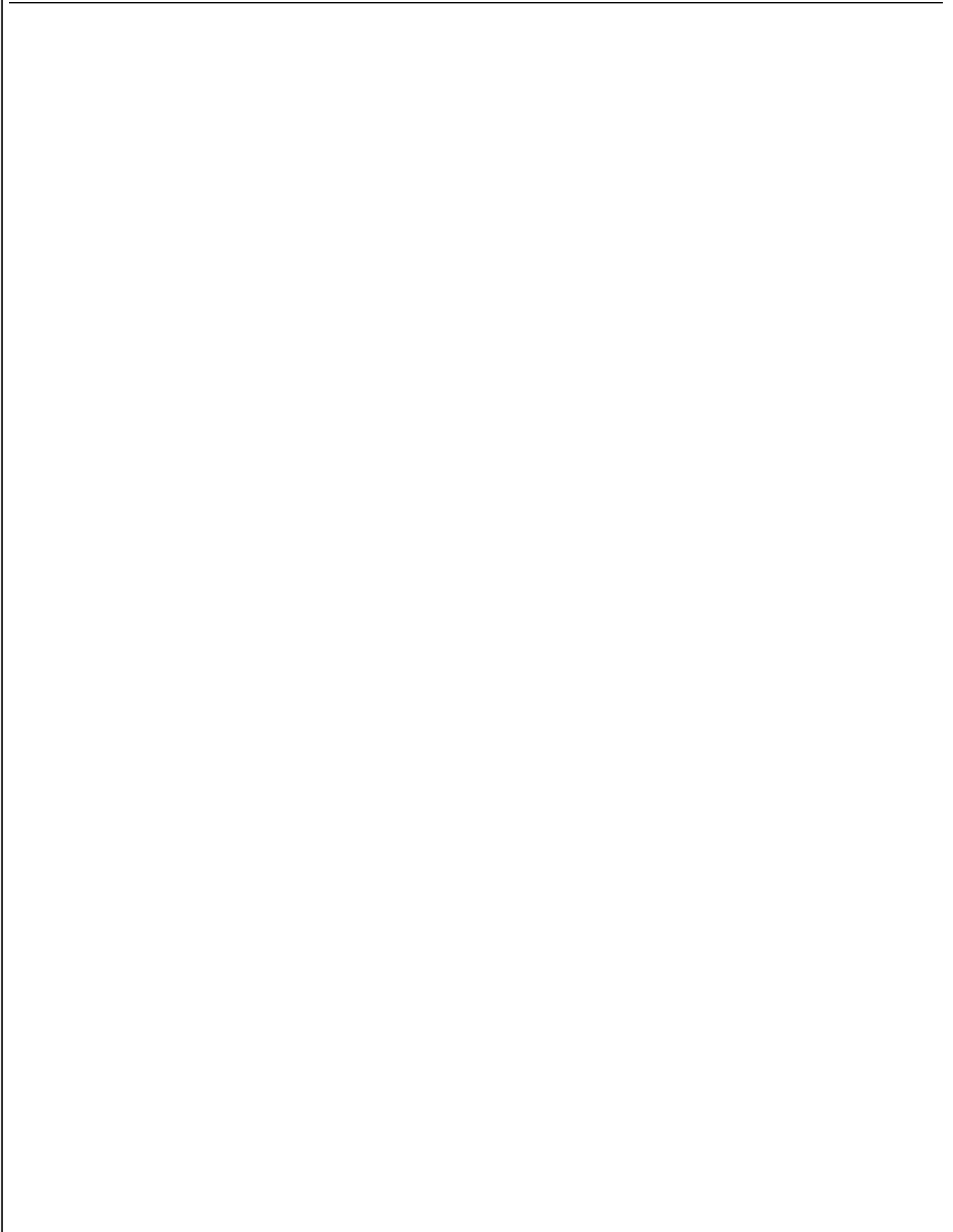
Checked By:

Prepared By:



**LG-T2727RGBA-TD-A**

**TOP Full-color LED**

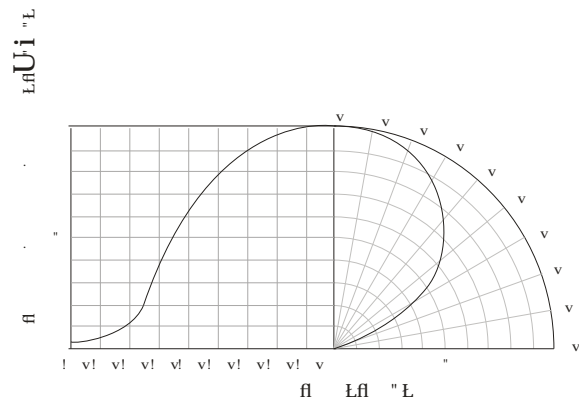
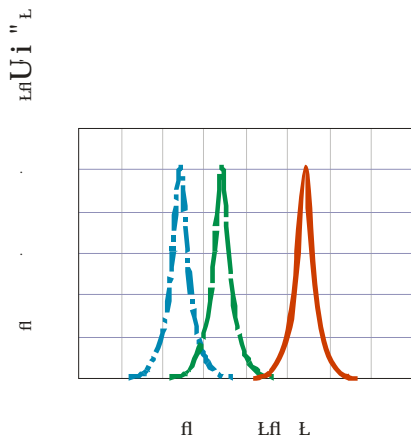
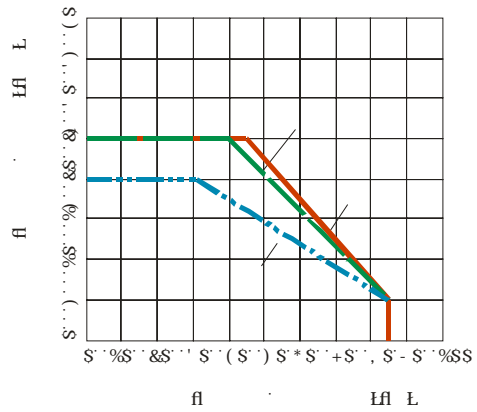
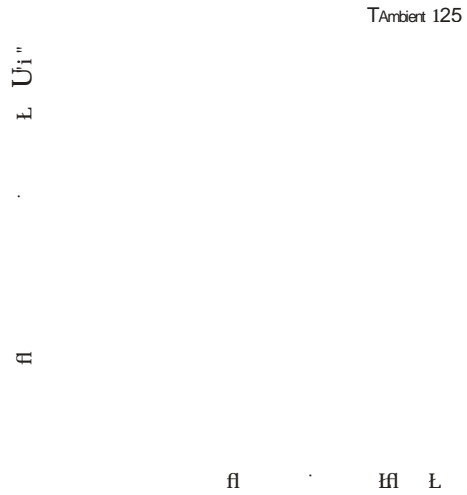
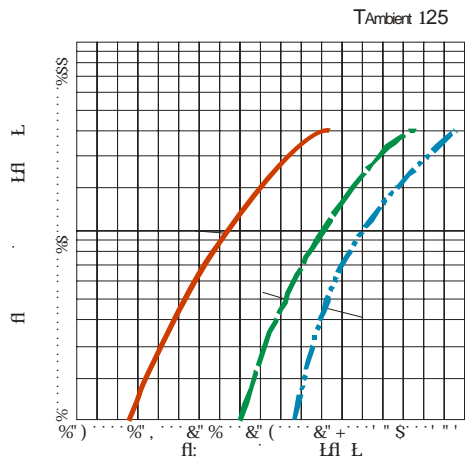


**LIGHT**

**LIGHT ELECTRONICS CO., LTD.**

---

## Typical Characteristics Curves





LIG

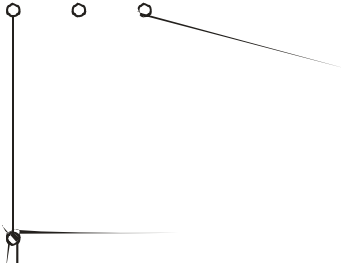
**LIGHT ELECTRONICS CO., LTD.**

---

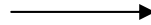
## 1

### Packaging (1)

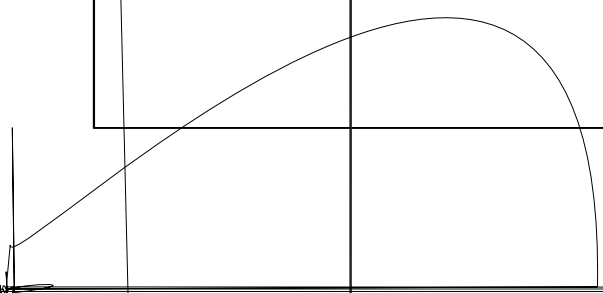
◇ Carrier Tape



◇ Details Of Carrier Tape



◇ Reel Dimension

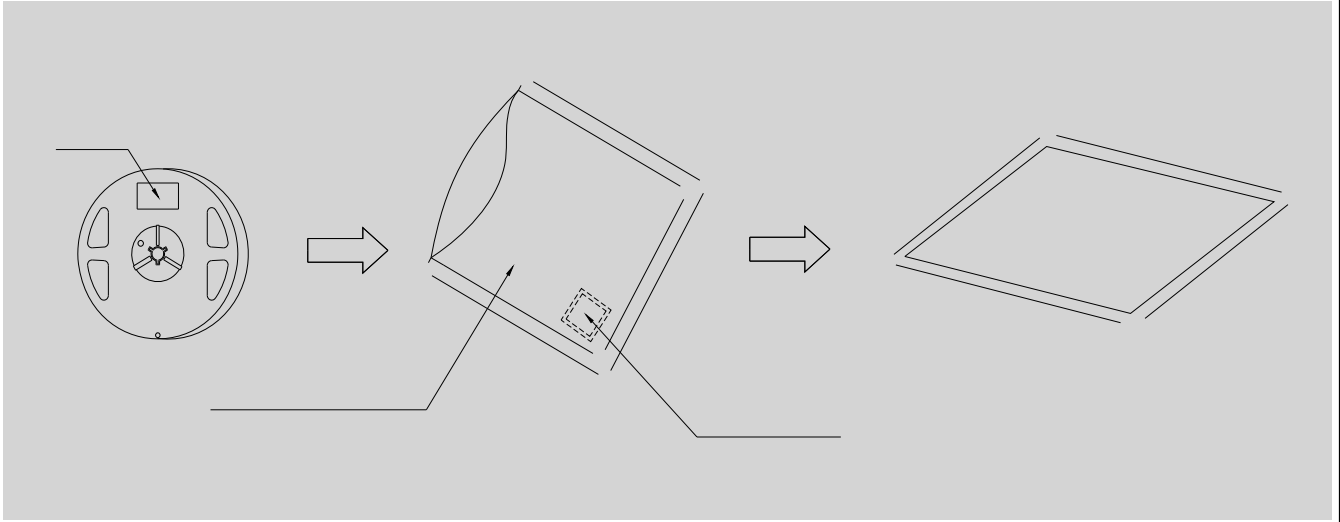


2

## Packaging( 2)



· Moisture Proof and Anti-Electrostatic Foil Bag



· Cardboard Box



· Label Explanation



1

Guideline for Soldering (1)

1.

Hand Soldering

•

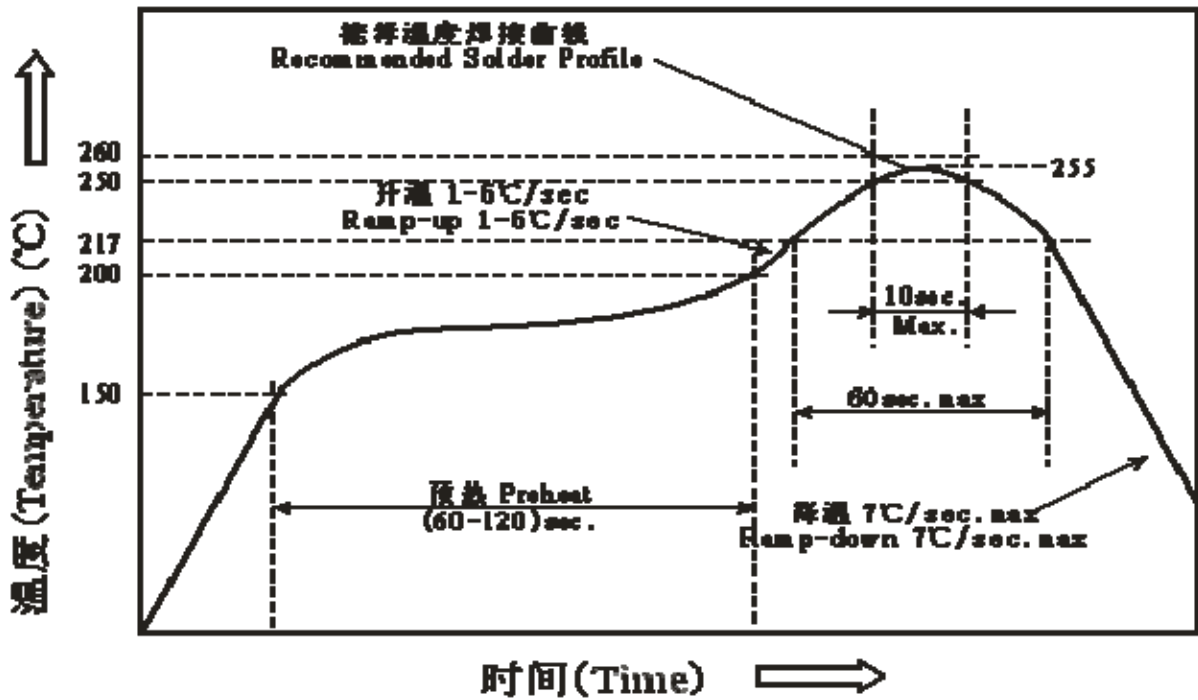
ž

•

•

•

Reflow Soldering:



## 2

### Guideline for Soldering (2)

- x .
- x .
- x .
- x .



## (1)

### Precautions (1)

1.

#### Storage

•

•

•

•

•

y

y

y

2.

#### Static Electricity

•

•

•

(2)

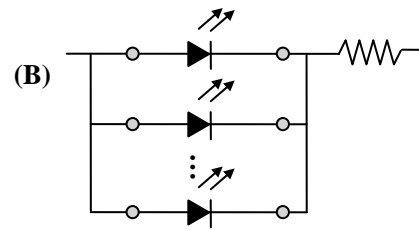
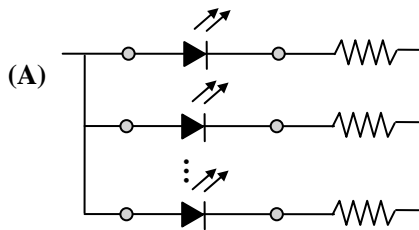
### Precautions (2)

3.

#### Design Consideration

•

•



•

4.

#### Reverse voltage protection

•

•

## (3)

### Precautions (3)

5.

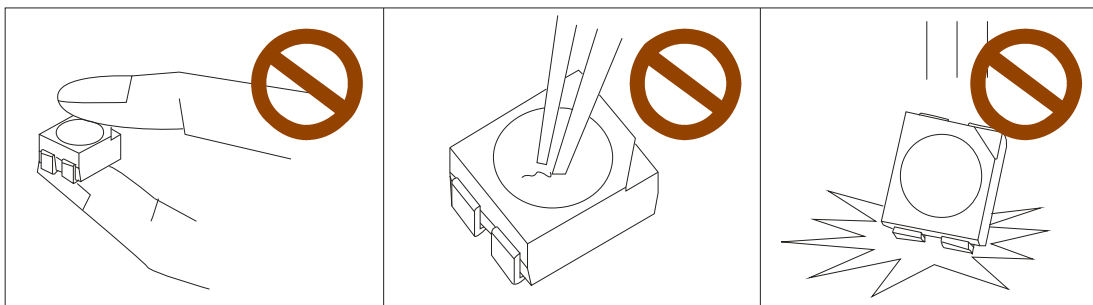
The safe temperature for LEDs working

- 

6.

Others

- 



-