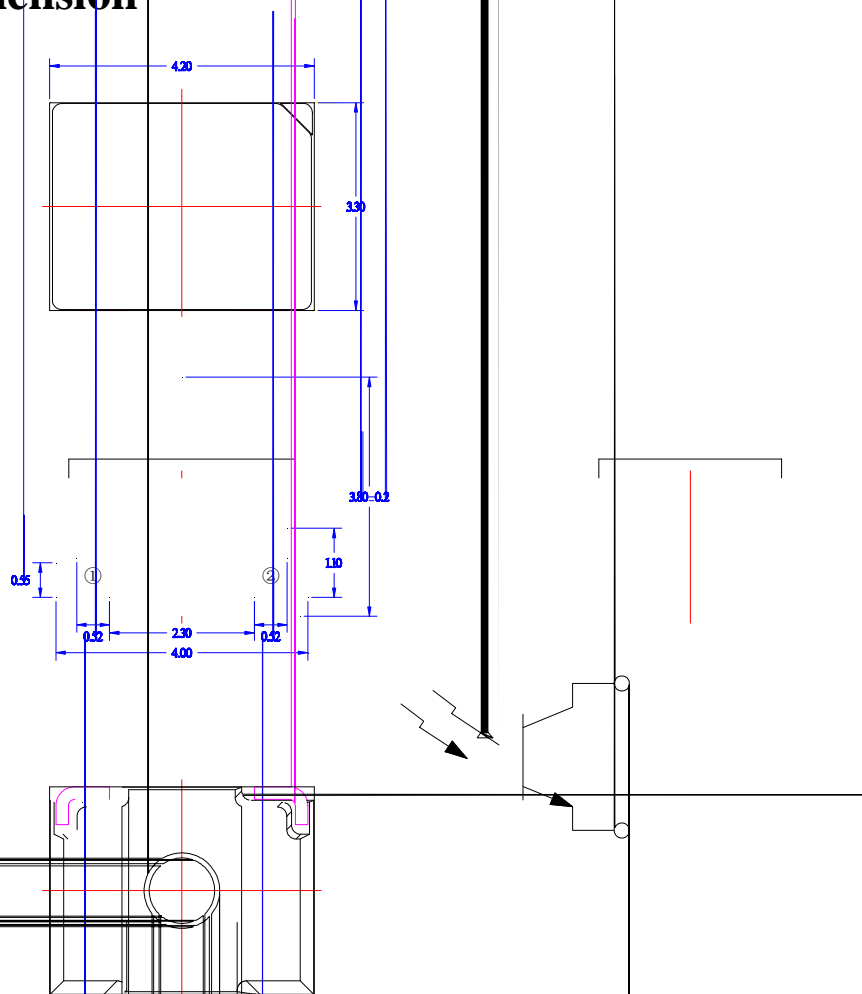


Features

- Pb free product—RoHS compliant
- High Photo Sensitivity
- Reliable and rugged
- Long life – solid state reliability
- Sensitivity angle: 35°

Package Dimension



Part NO.	Chip Material	Lens Color
SL-T4232PTB020-L380	Silicon	Black

Notes:

1. All dimensions are in millimeters.
2. Tolerance is ± 0.10 mm unless otherwise noted.
3. Specifications are subject to change without notice.

Typical Electrical / Optical Characteristics Curves (25 Ambient Temperature Unless Otherwise Noted)

FIG.1 Relative Response vs. Wavelength

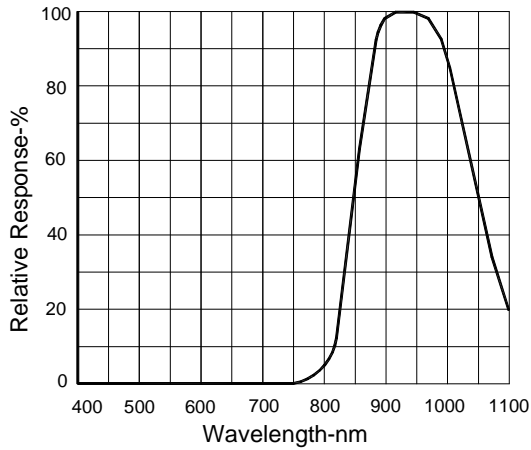


FIG.2 Power Dissipation Vs. Ambient Temperature

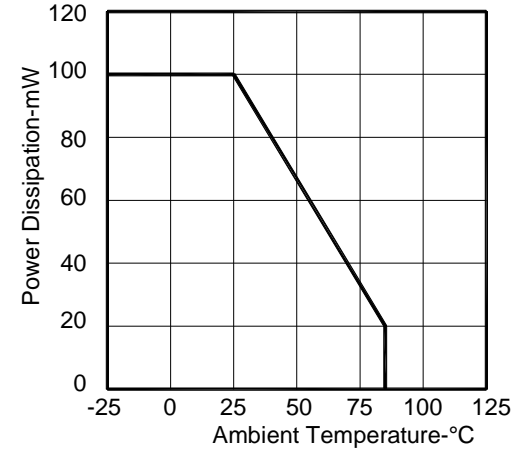


FIG.3 Rise And Fall Time Vs. Load Resistance

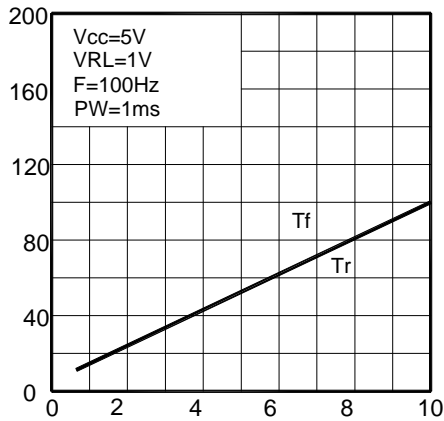


FIG.4 Relative Collector Current Vs. Irradiance

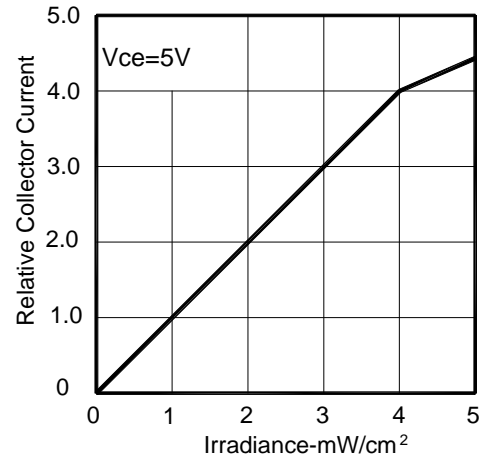


FIG.5 Collector Dark Current Vs. Ambient Temperature

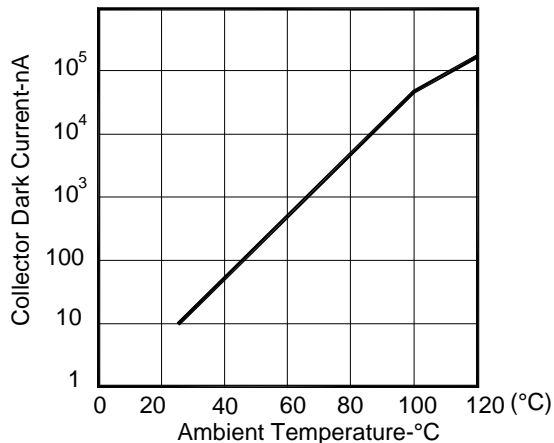
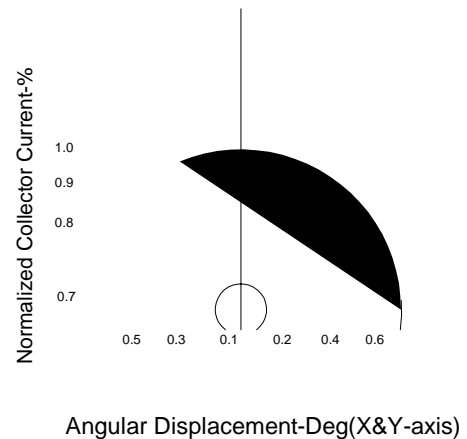


FIG.6 Light Current vs. Angular Displacement




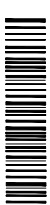
Ic(on) Bin Code ($V_{CE}=5V$, $E_e=1mW/cm^2$, $p=940$)

BIN CODE	Min.(A)	Max.(A)
65	9.2	11.0
66	11.0	13.0
67	13.0	15.5
68	15.5	18.5
69	18.5	22.0


NOTE: The Ic(on) guarantee should be added $\pm 15\%$ tolerance.

Label Explanation

LIGHT Universal Label

LIGHT Light Electronics CO., LTD.	
MODEL NAME: _____	 LOT NO. : _____
QUANTITY: _____	
BIN: _____	
PACKING DATE: _____	
REMARKS: _____	

Customer Defined Label

LIGHT Light Electronics CO., LTD.	
MODEL NAME: _____	
QUANTITY: _____	
BIN: _____	
PACKING DATE: _____	
CUSTOMER: T B	

